

Golf at its best!

Jack Nicklaus, Greg Norman sculpt Vancouver Island's newest courses

ROY WOOD

Edmonton Journal Special Projects Writer

Given the stunning success of Jack Nicklaus's Bear Mountain Golf Resort near Victoria, it's no surprise the Golden Bear is back on Vancouver Island, this time on the rugged west coast.

Neither is it surprising that his old PGA Tour colleague Greg "The Shark" Norman has jumped into the game with his own course near Duncan.

The latest Nicklaus development, Wyndansea, is certainly aimed at the highest end of the market with the first offering of house sites ranging in price from \$1.3 million to \$2.2 million.

The 150-hectare course will be just north of Ucluelet on the rim of Barkley Sound, squeezed between the Pacific Ocean and Ucluelet Inlet. It will be next door to Pacific Rim National Park and within the boundaries of the UNESCO Clayoquot Biosphere Reserve.

You can hear the excitement in Nicklaus's voice as he describes the course, which is expected to open in 2011: "The rugged coastline, the wild Pacific, and the ancient rainforest surrounding Wyndansea are spectacular. I think the golf experience has the potential to be as unique and memorable as the piece of property already is.

"On the Pacific side of the property are steep cliffs with waves crashing below, and on the inlet side you have holes that will play alongside a bay or a bluff. In between the coasts you have rugged topography that lends itself to a great variety of inland holes some with great views of the ocean."

When finished, plans call for Wyndansea to include a 180-suite hotel, 95 ocean-front and golf villas, resort condominiums, a recreation centre, a deep-water marina and a seaplane base.

Norman's golf/recreation/residential development on the other side of the island, The Cliffs Over Maple Bay, is halfway between Victoria and Nanaimo, near Duncan. The Cliffs will eventually include more than 700 single- and multi-family residences.

According to The Cliffs marketing manager Zane Bouvette, the course is 70 per cent completed and the hope is to have it open by the spring or summer of 2009.

The treeless 6,900-yard, par-72 course sits atop a hill that provides a panoramic view over the town of Maple Bay and across Georgia Strait to Salt Spring Island.

The Cliffs is Norman's first venture in B.C. and only his third in Canada.

As for the tour legend's involvement in the design of the course, Bouvette said, "(Norman) was very hands-on. Last time he was here we did the final design changes. He walked every hole."

Single-family lots at The Cliffs are selling now in the \$250,000 to \$500,000 range.

Back down the island at Bear Mountain, the bulldozers are hard at work on the second 18-hole Nicklaus-designed course, this one called the Valley Course.

Head pro Steve MacPherson says the Valley Course has a more isolated feel than the mountain course, with more trees and less development.

"It looks exciting. There's lots of water, a lot of exposed rock."

There is also more elevation change in the valley, and most of the holes have elevated tees.

MacPherson says they're shooting for October to have the 7,000-yard course open.



The Edmonton Journal (Edmonton, AB)			Order/Commande 136931
Date 26.05.2008	Circ. 138700	Page H20	2 / 3

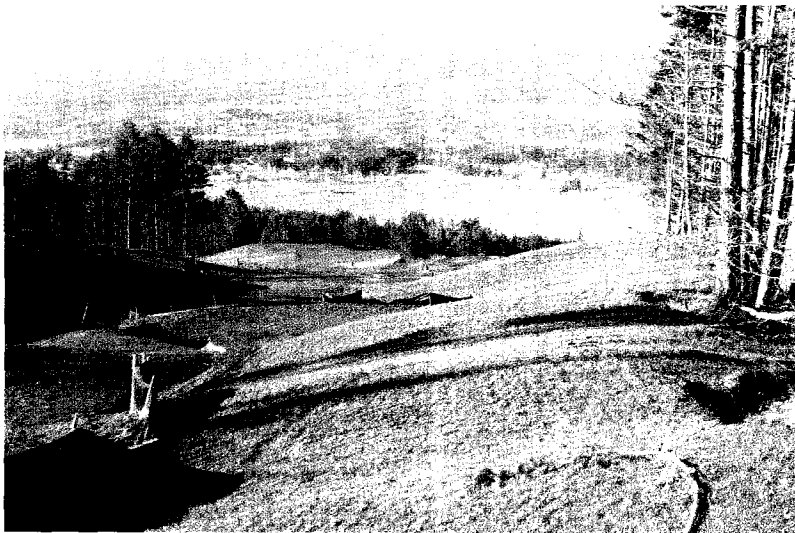


PHOTO: SARA BOUVETTE

The Cliffs Over Maple Bay golf course in the Duncan area is a Greg Norman-designed course slated to open in 2009.



For a full list of golf courses on Vancouver Island, look under **Current Features** at www.edmontonjournal.com.



PHOTO: BEAR MOUNTAIN
Bear Mountain, a Jack Nicklaus-designed course is in Victoria.

PHOTO: WYNDANSEA RESORT
A couple look out at the Pacific Ocean from the 15th hole at the Jack Nicklaus Signature Golf Course at Wyndarsea Ocean Resort.